



# Oakland County Sheriff's Office Technology, Information & Innovation

## \* INFORMATIONAL \*

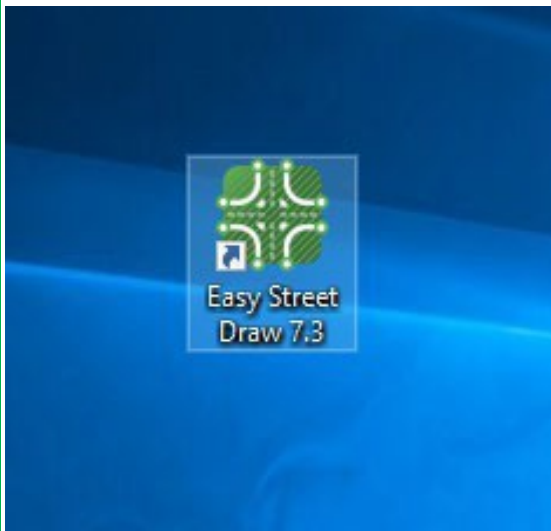
### CRASH DIAGRAM FIX INSTRUCTIONS (EASY STREET DRAW)

1/09/2025

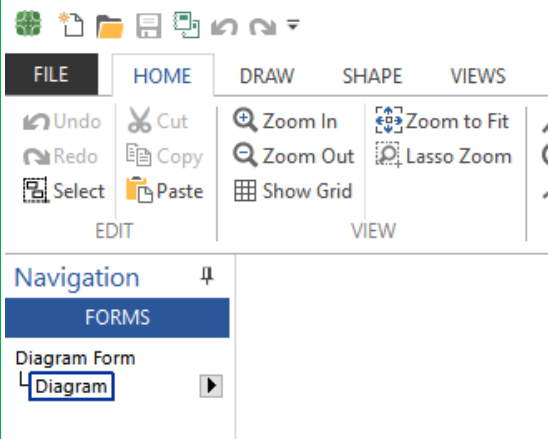
**Information:** If you are unable to locate a recently created crash diagram, please follow the below instructions.

**Impacted Applications/Services:** Crash diagrams on laptops and/or PCs

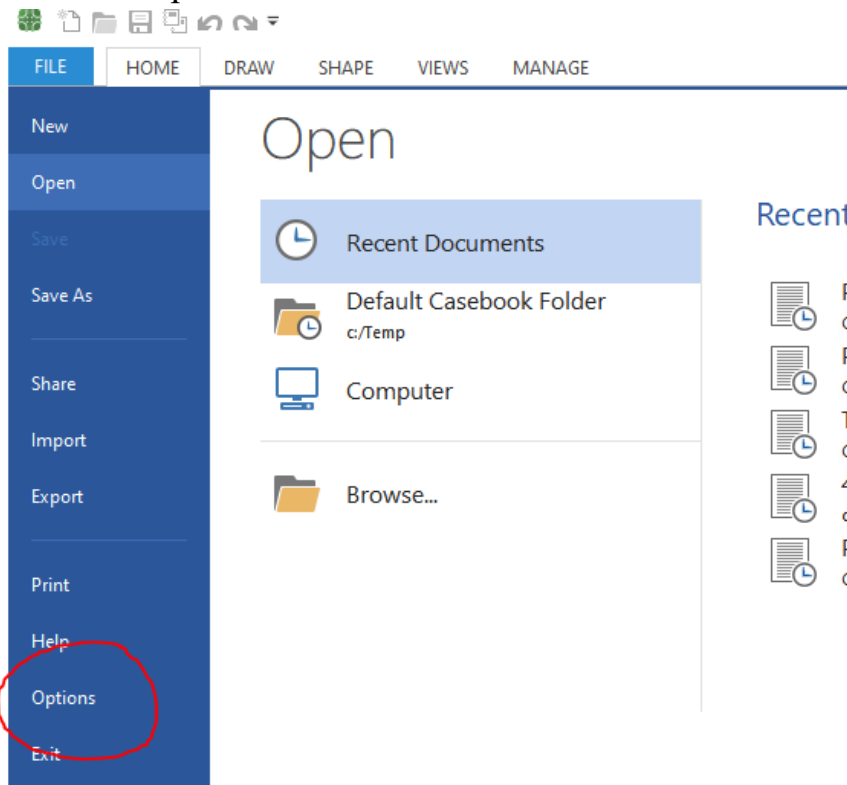
**Action Required:** Click on the 'Easy Street Draw' icon on your computer:



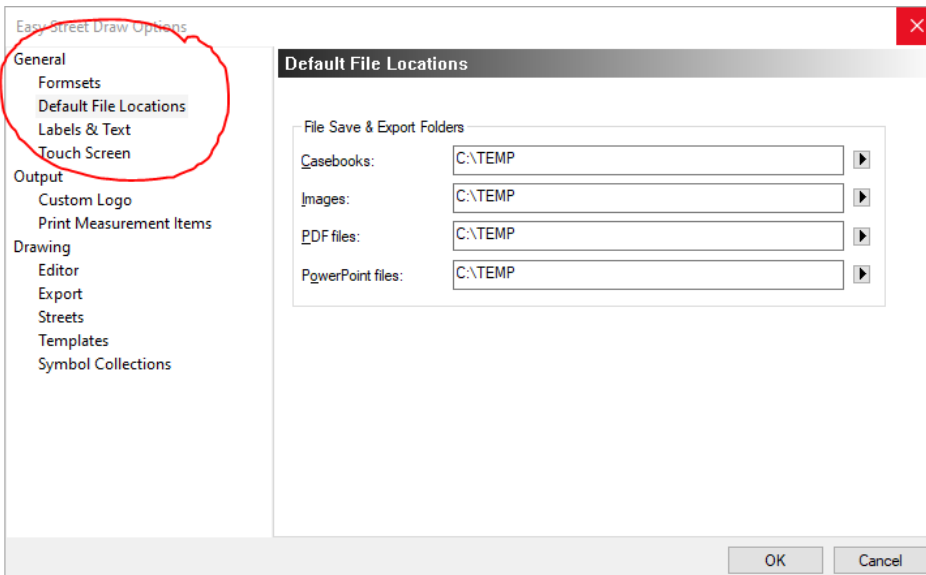
Click on 'File' in the upper left corner:



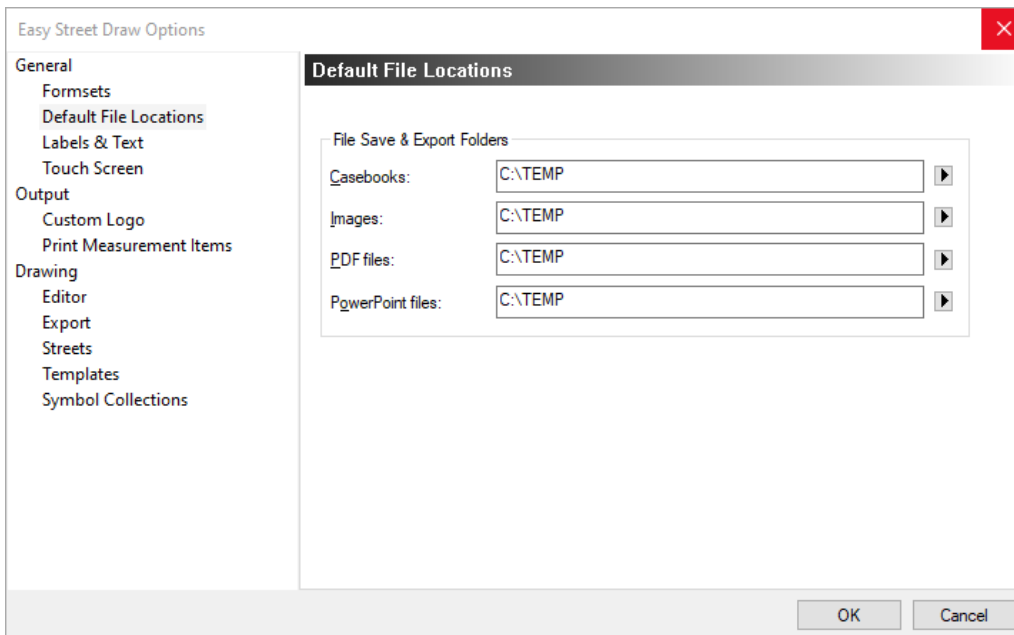
Click on 'Options:'



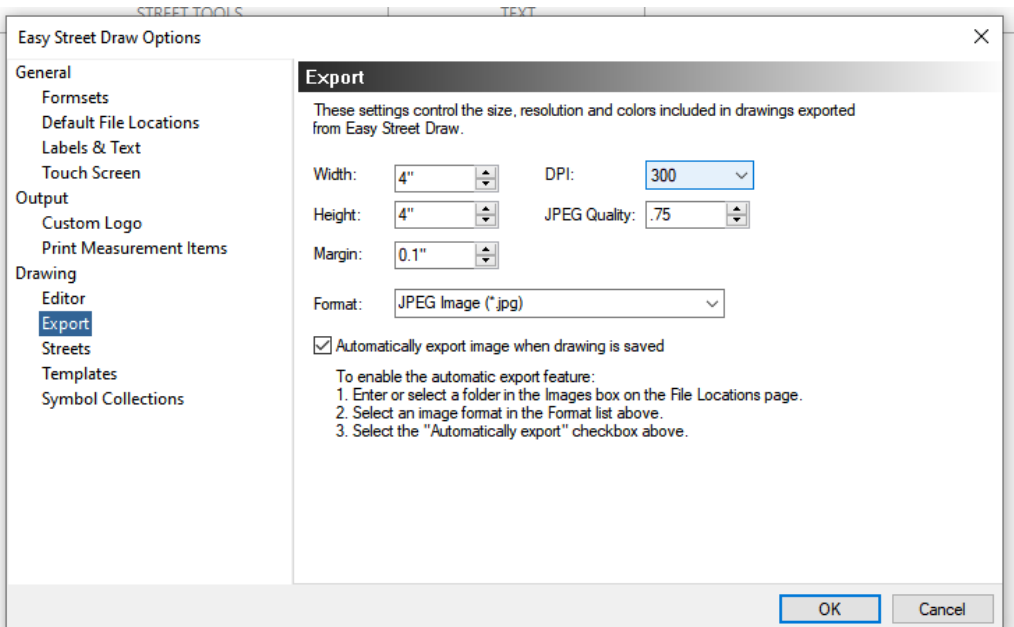
Click on 'Default File Locations:'



Make sure each folder has 'C:\TEMP' typed in the box. If it is not there, type it in. Click 'OK' at the bottom.



When all configuring is correct, go back to your crash and update the diagram. When it comes up, re-save (purple 'Save' disk at the top). NOTE: You may need to manipulate the diagram to see the 'Save' disk. Then 'X' out of Easy Street Draw and refresh in CRASH.



**Contacts:** If you have any questions or issues, please contact Ali Spezia ([speziaa@oakgov.com](mailto:speziaa@oakgov.com); 248-858-1522) or Sheryl Robenault ([robenaults@oakgov.com](mailto:robenaults@oakgov.com); 248-858-4061) of the TII Division.